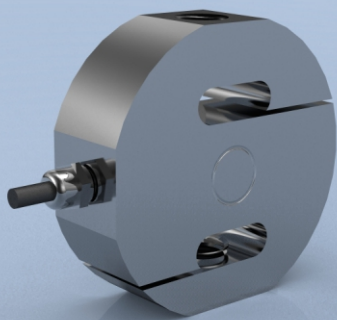


TYPE: STA-2



STA-2 Stainless Steel S Type Tension & Compression Load Cell

Description

The STA-2 load cell series is ideal for measuring both tensile and compressive forces. The standard metric threads at each end of the load cell are designed to accept standard spherical seating rod-end bearings.

The STA-2 is suitable for many applications where a tension and compression load cell is required for high accuracy measurements. Applications such as vessel weighing, material test machines and dynamometers are a few examples.

The STA-2 series can be supplied on its own or combined with our extensive range of instrumentation to provide a complete load monitoring system.

Features

- Ranges: 250 to 20,000kg
- Stainless steel fully welded construction
- Environmentally sealed to IP68
- Can be supplied complete with mating spherical rod-end bearings

Specification

Rated load	250kg, 500kg, 1te, 2te, 5te, 10te, 20te	
Proof load	150% of rated load	
Ultimate breaking load	>300% of rated load	
Output	2mV/V at rated load ($\pm 0.25\%$)	
Accuracy	$\leq \pm 0.03\%$ of rated load	
Non-repeatability	$\leq \pm 0.01\%$ of rated load	
Excitation voltage	10vdc recommended, 15vdc maximum	
Bridge resistance	350 Ω	
Insulation resistance	>500M Ω at 100vdc	
Operating temperature range	-20 to +60°C	
Compensated temperature range	-10 to +40°C	
Zero temperature coefficient	$\leq \pm 0.002\%$ of rated load/°C	
Span temperature coefficient	$\leq \pm 0.002\%$ of rated load/°C	
Environmental protection level	IP68	
Connection type	4 metres PVC screened cable, via gland cable	
Wiring connections	+supply: Red	-supply: Blue
	+signal: Green	-signal: Yellow

Typical Applications

- Vessel weighing
- Hanging scales
- Multipoint structural weighing
- Material/tensile test machines
- General force measurement

Available Options

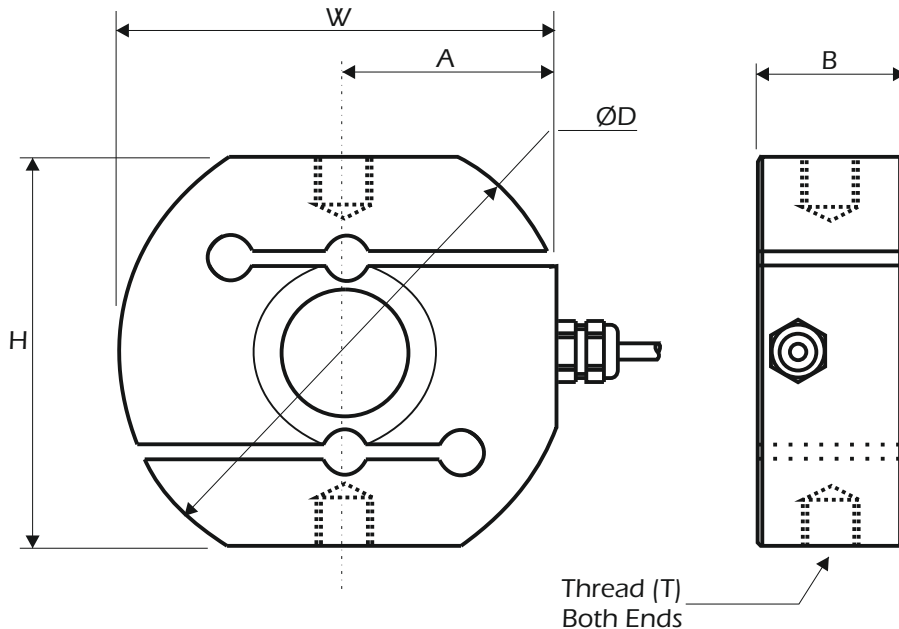
- Spherical seating rod end bearings
- Compression load button
- TEDS option (when used with TR150 handheld display)

LCM Systems Ltd

Unit 15, Newport Business Park
Barry Way, Newport
Isle of Wight PO30 5GY UK
Tel: +44 (0)1983 249264
Fax: +44 (0)1983 249266
sales@lcmsystems.com
www.lcmsystems.com

STA-2 Stainless Steel S Type Tension & Compression Load Cell

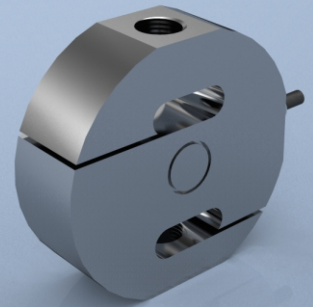
Dimensions



All dimensions are in mm

Rating (kgs)	Part Number	A	W	H	B	ØD	Thread (T)	Resolution (kgs)	Weight (kgs)
250	STA-2-250	35	72.5	70	24.5	75	M12 x 1.75	0.02	0.8
500	STA-2-500	35	72.5	70	24.5	75	M12 x 1.75	0.05	0.8
1000	STA-2-1000	45	95	95	30	100	M20 x 1.5	0.1	1.7
2000	STA-2-2000	45	95	95	30	100	M20 x 1.5	0.2	1.7
5000	STA-2-5000	57.5	120	120	40	125	M24 x 2	0.5	3.6
10,000	STA-2-10000	65	141	145	55	152	M30 x 2	1	6.5
20,000	STA-2-20000	88	188	190	70	200	M45 x 3	2	15

Note: default calibration of load cells rated to 10,000 kgs will be in tension. The STA-7 rated at 20,000 kgs will be in compression. If you require calibration in a different mode to the standard or in both tension & compression, please state at time of order (additional charges may apply).



www.lcmsystems.com



SCIGATE AUTOMATION (S) PTE LTD

No.1 Bukit Batok Street 22 #01-01 Singapore 659592

Tel: (65) 6561 0488

Fax: (65) 6562 0588

Email: sales@scigate.com.sg

Web: www.scigate.com.sg

Business Hours: Monday - Friday 8.30am - 6.15pm

Due to continual product development, LCM Systems Ltd reserves the right to alter product specifications without prior notice.

Issue No. 2

Issue date: 09/12/2015

APPROVED

(unapproved if printed)